



SLOVNIK
ZNAKOVÉHO JAZYKA
ANEB ZNAKOVKA DO ŠKOL

Milí žáci, učitelé, rodiče, čtenáři,

v rukou držíte první vydání Slovníku znakového jazyka aneb Znakovka do škol, slovníku určeného pro děti a připraveného dětmi.

Kromě slovníkové části rozdělené do 20 tematických okruhů – slovíčka pro ně vybrali žáci 4. A a 4. B Základní školy Martina Luthera v Plzni – obsahuje knížka 10 základních pravidel komunikace se sluchově postiženým, dvouruční prstovou abecedu, základy znakového jazyka a znaky k pohádce „Boudo, boudičko!“

Slovník jako celek má vlastně podobu vymalovánek: každý tematický okruh doprovází celostránková ilustrace, kterou si děti mohou vybarvit.

Chtěli jsme, a snad se to i podařilo, vytvořit slovník, který by byl dětem základní pomůckou při komunikaci se sluchově postiženým vrstevníkem, knížku, ke které by se vracely opakovaně – ať už s rukama dychtícíma naučit se „mluvit“, nebo s pastelkou v ruce.

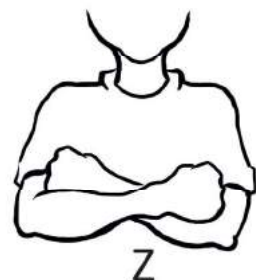
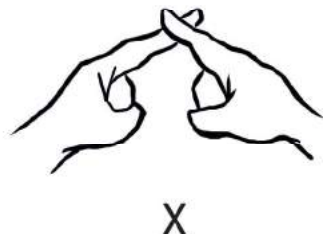
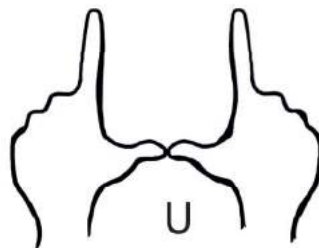
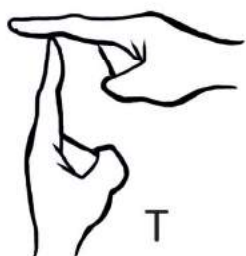
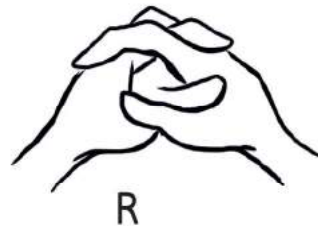
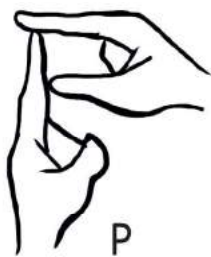
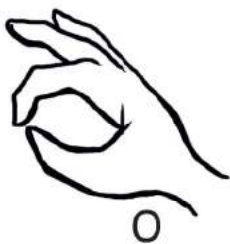
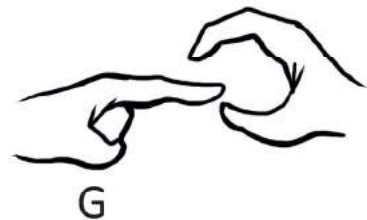
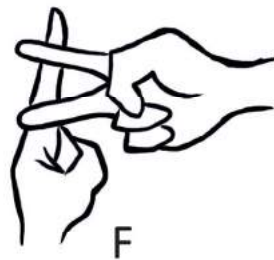
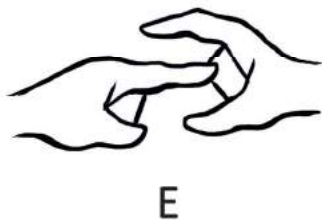
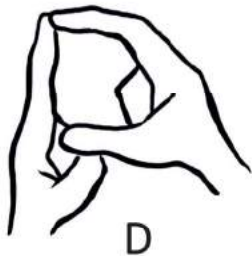
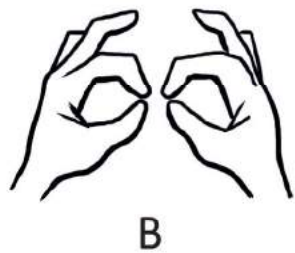
Vydání slovníku by nebylo možné bez finanční podpory z grantové výzvy T-Mobile Mluvme spolu pro rok 2016. Děkujeme!

PRAVIDLA

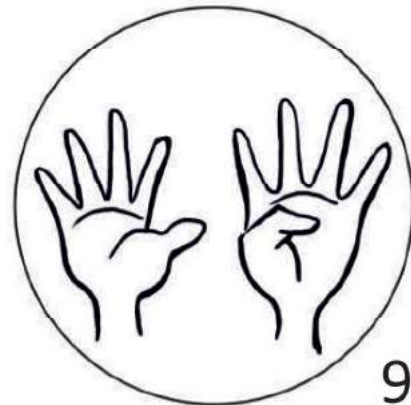
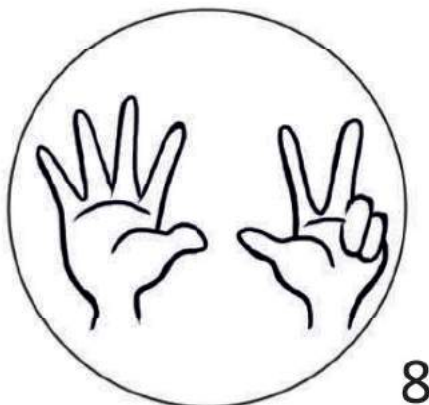
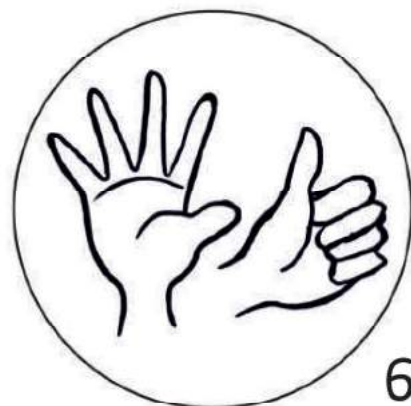
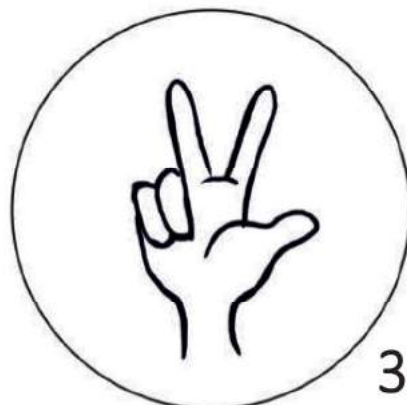
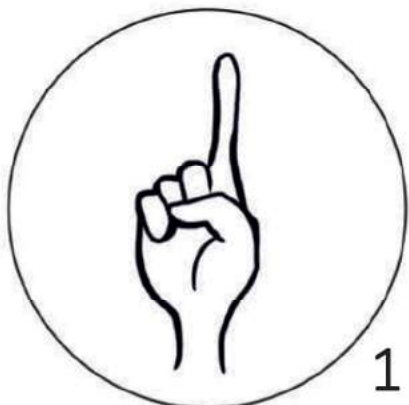
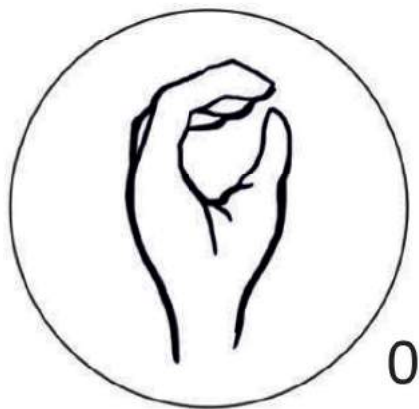
pro komunikaci se sluchově postiženým
spolužákem/kamarádem

- udržujeme oční kontakt
- nekřičíme
- mluvíme pomalu
- nepoužíváme cizí slova
- mluvíme čelem k postiženému
- nezakrýváme si pusou, nežvýkáme,
nemluvíme s plnou pusou (nejde odezírat)
- artikuluje
- opakujeme slova, kterým kamarád nerozuměl
- nepouštíme nahlas hudbu, která by ho rušila
- nestojíme před oknem, popř. nemáme
za sebou slunce (nejde odezírat)

PRSTOVÁ ABECEDA



ČÍSLOVKY



DNY V TÝDNU



Pondělí



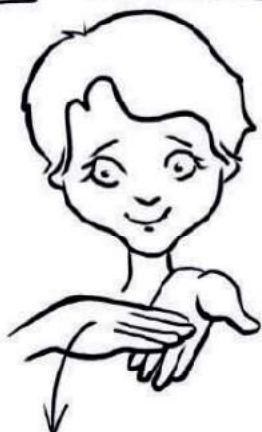
Úterý



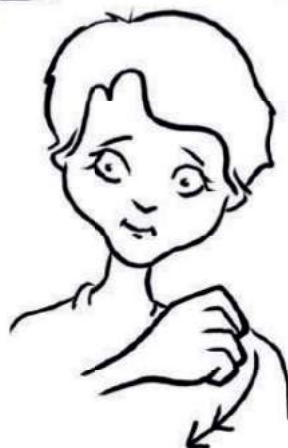
Středa



Čtvrtek



Pátek



Sobota

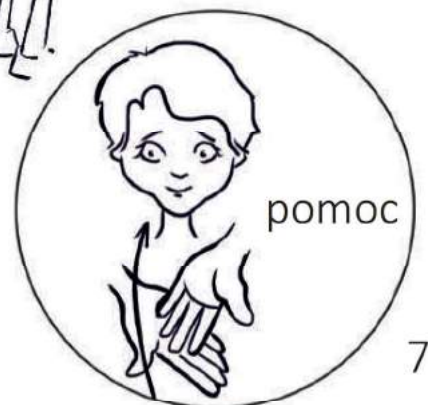
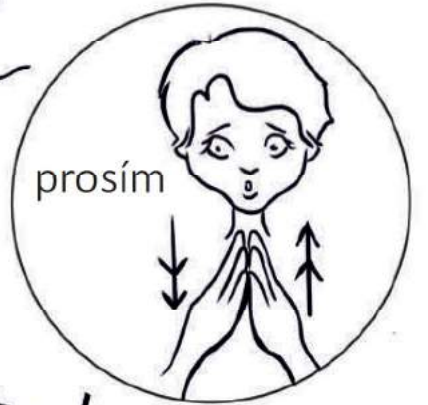
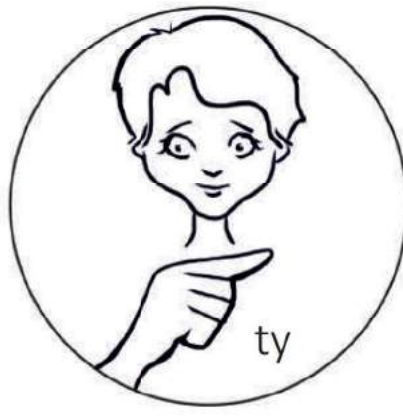
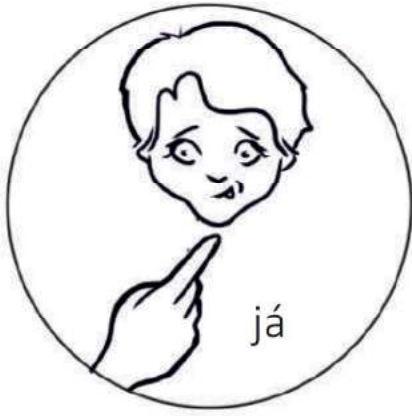


Neděle

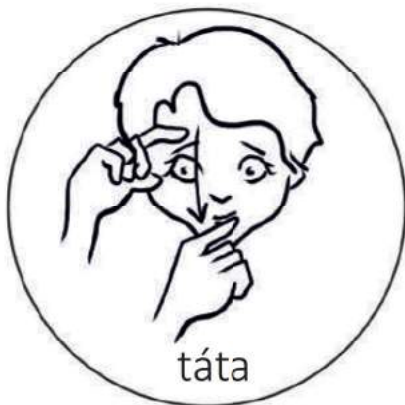
POZDRAV



FRÁZE



RODINA



táta



máma



děda



babi

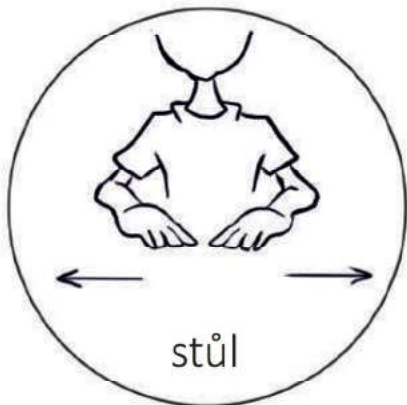
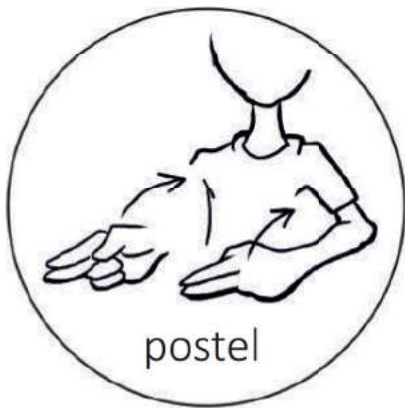


rodiče



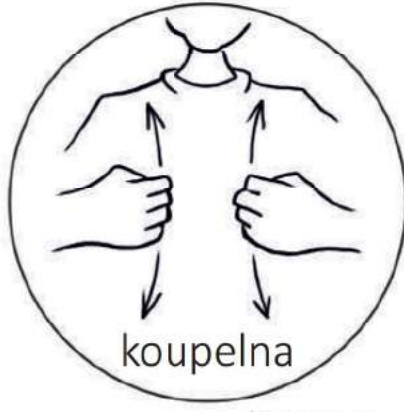


BYT





koberec



koupelna



záchod



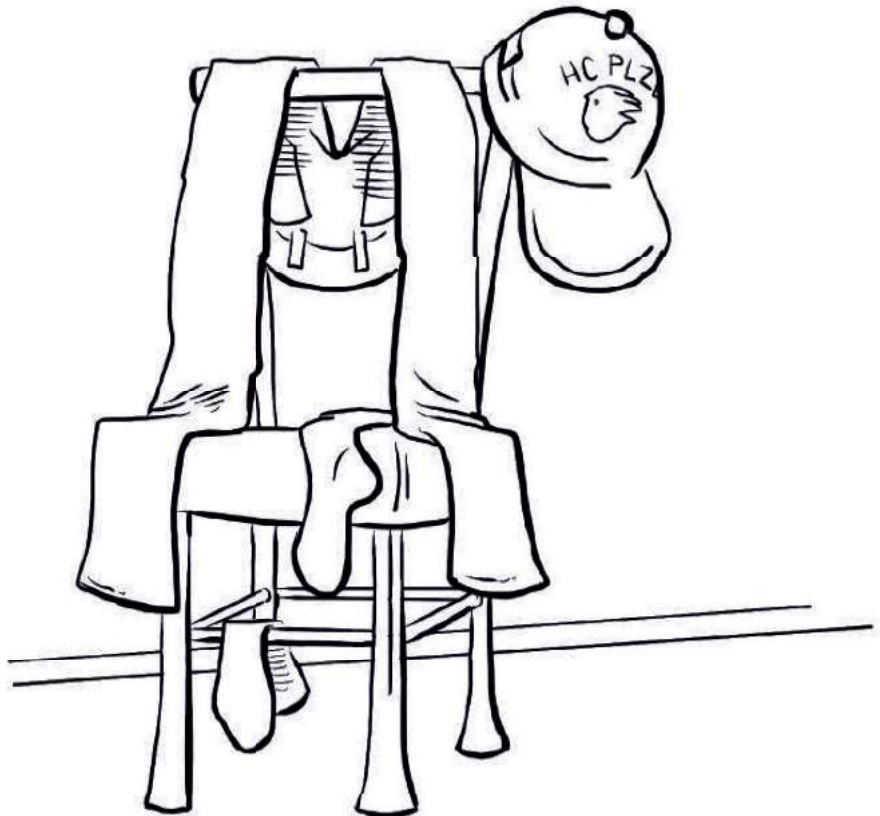
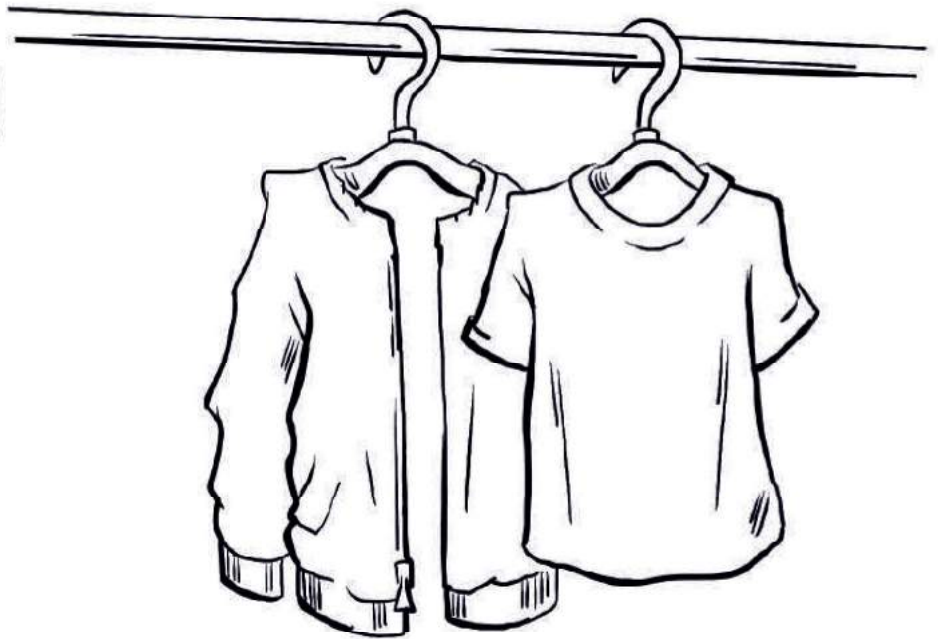
obraz

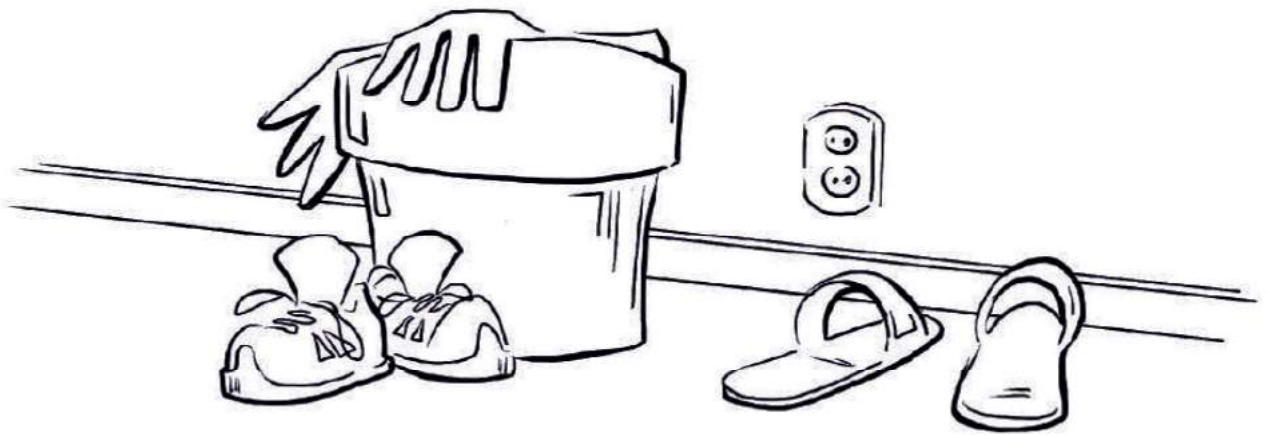
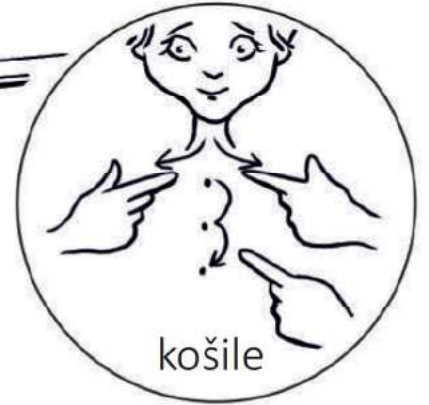
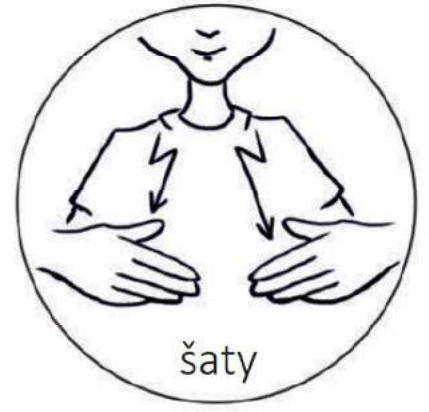


lampa



OBLEČENÍ





PITÍ





džus



káva



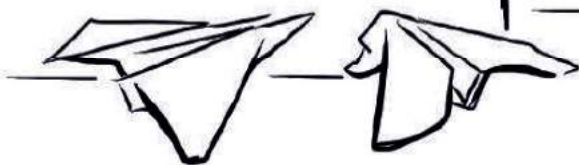
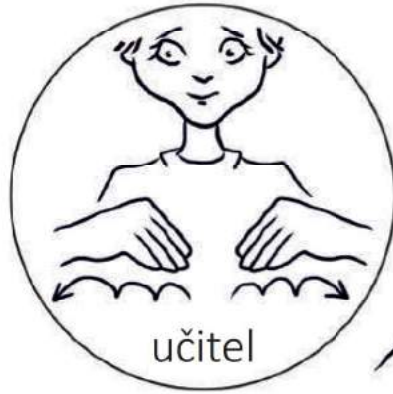
limonáda

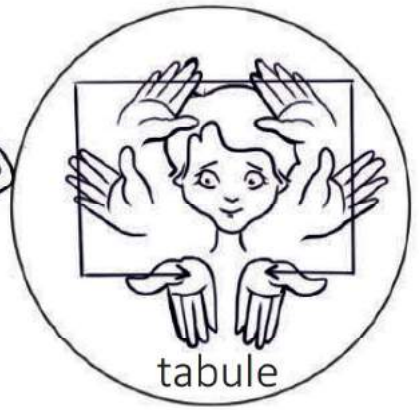


pivo



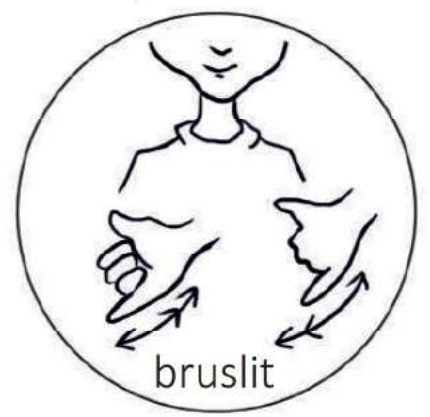
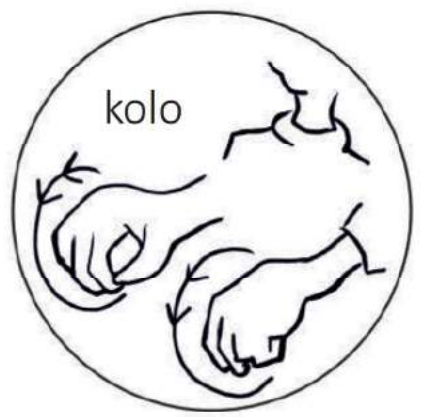
ŠKOLA



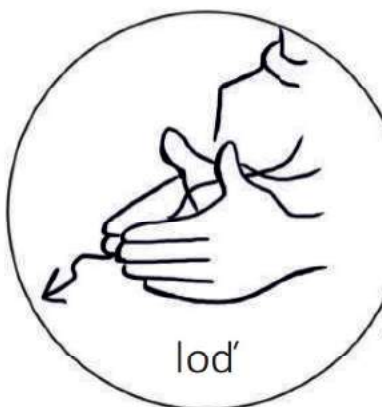
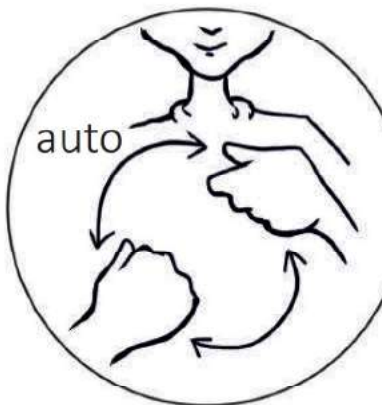
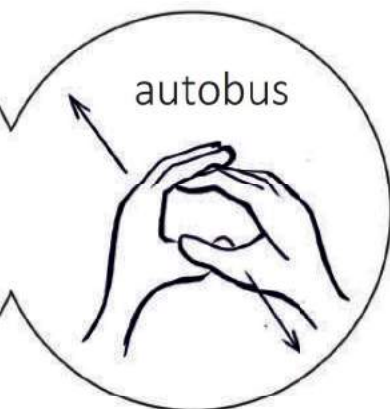
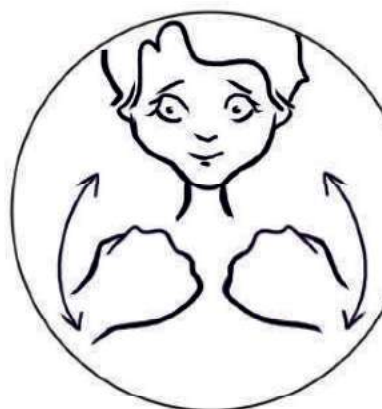


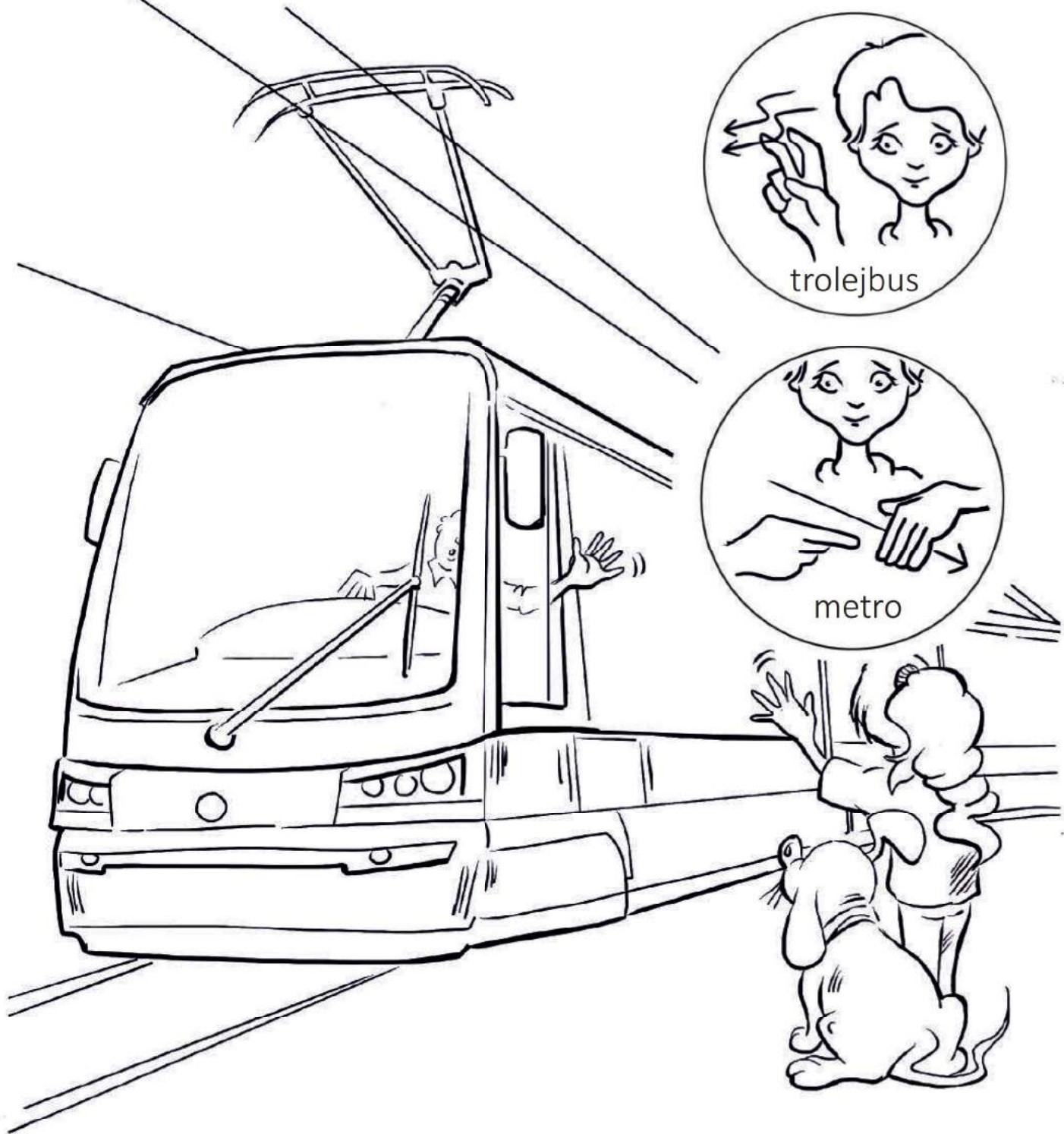
SPORT



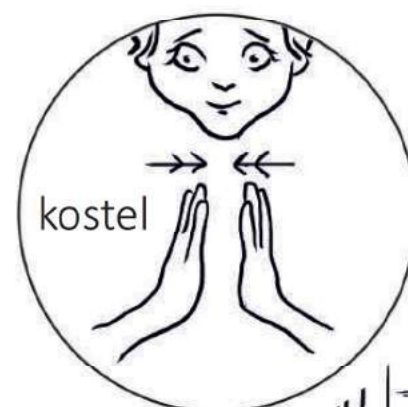
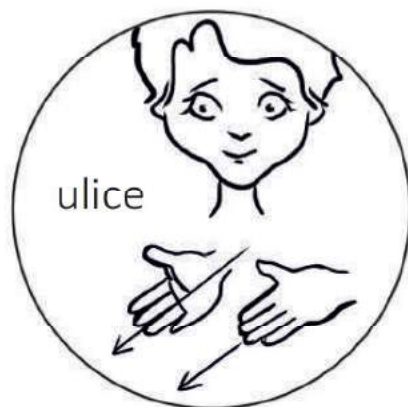
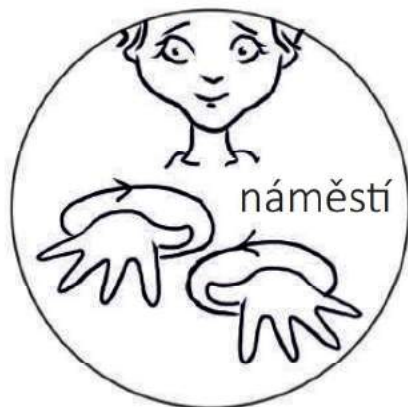


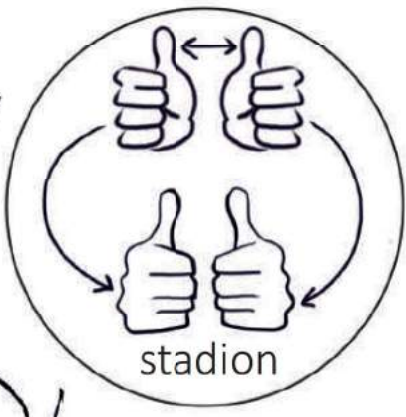
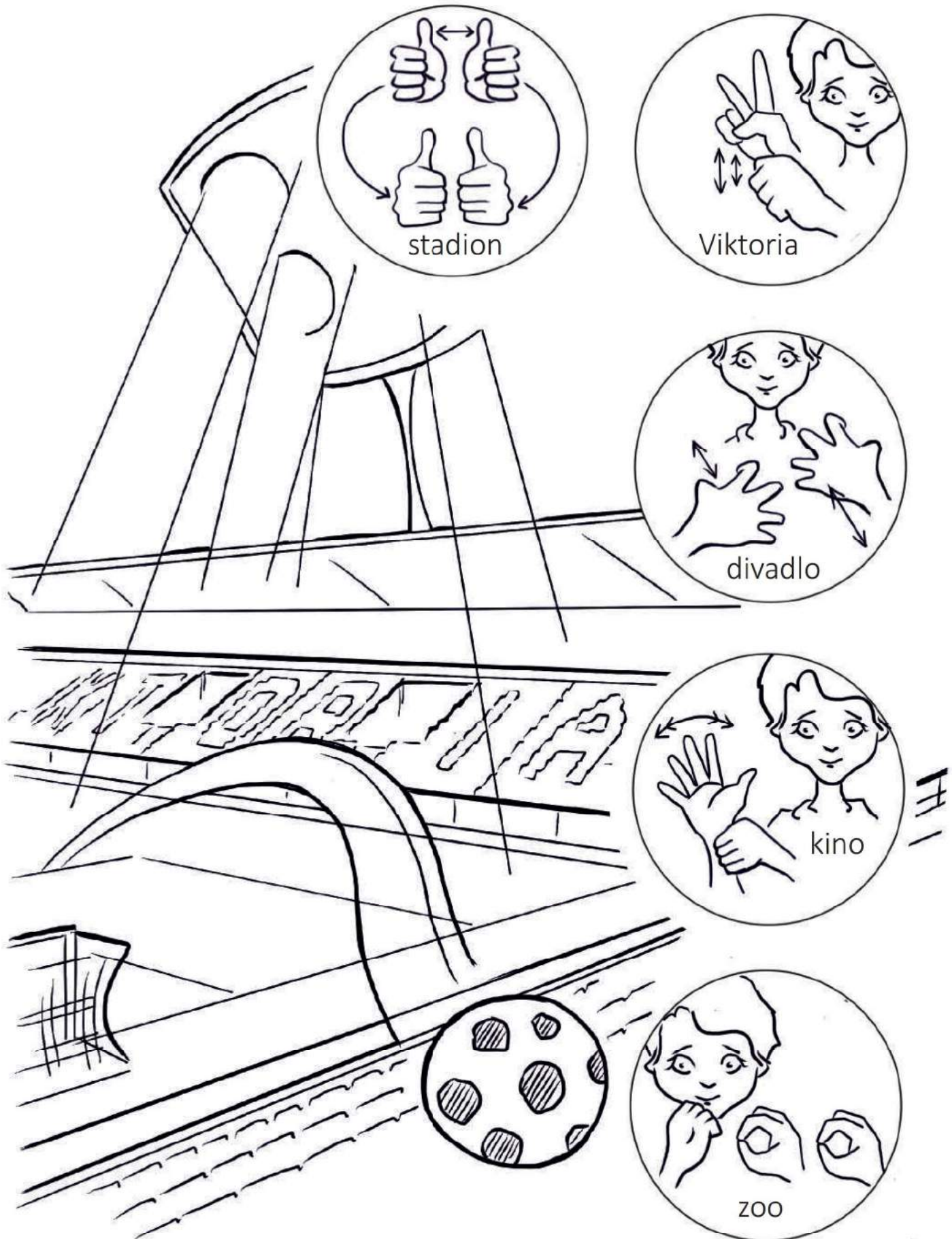
DOPRAVNÍ PROSTŘEDKY





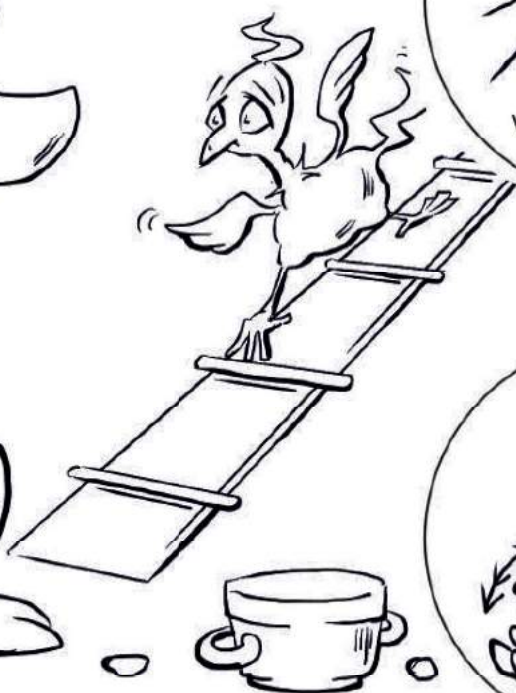
PLZEŇ

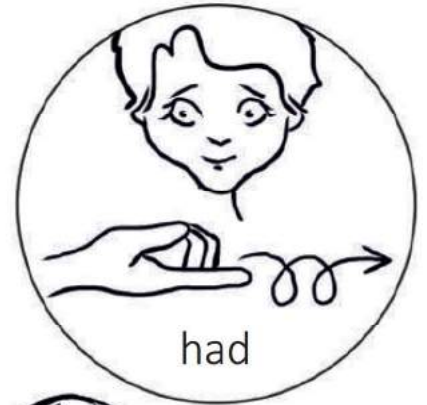




111

ZVÍŘATA



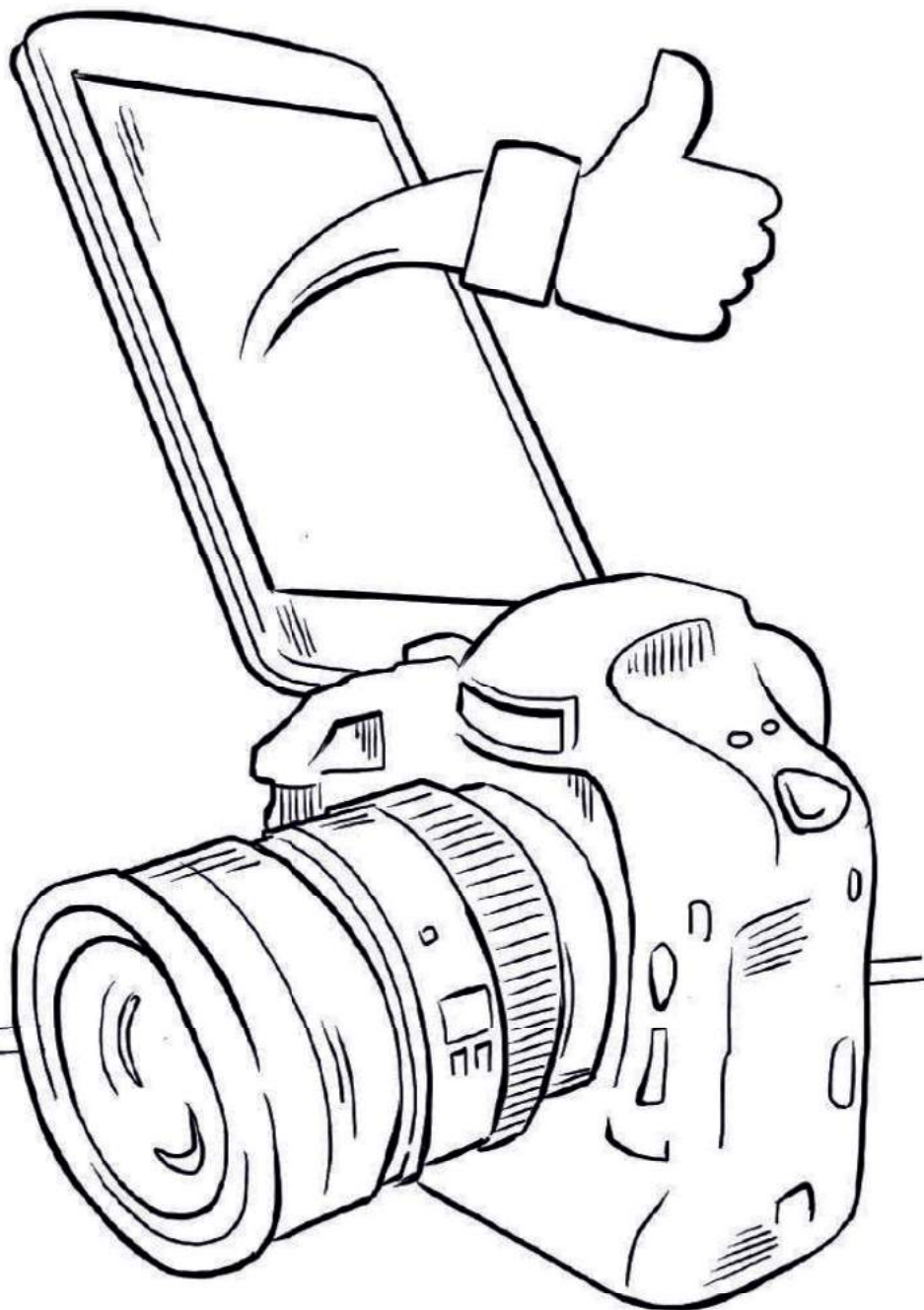
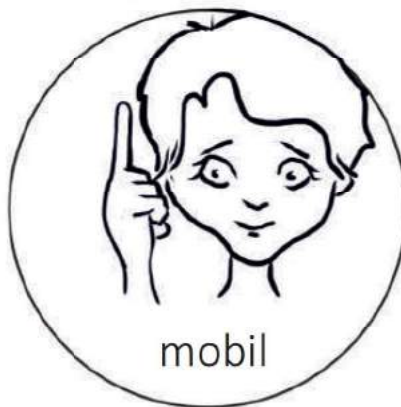


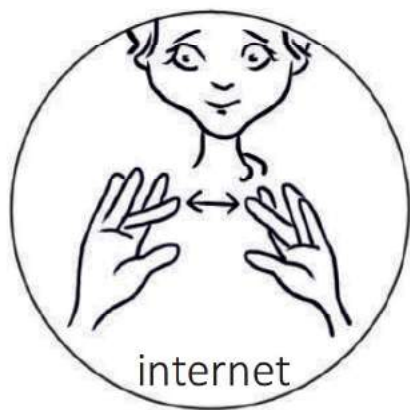
POVAHA



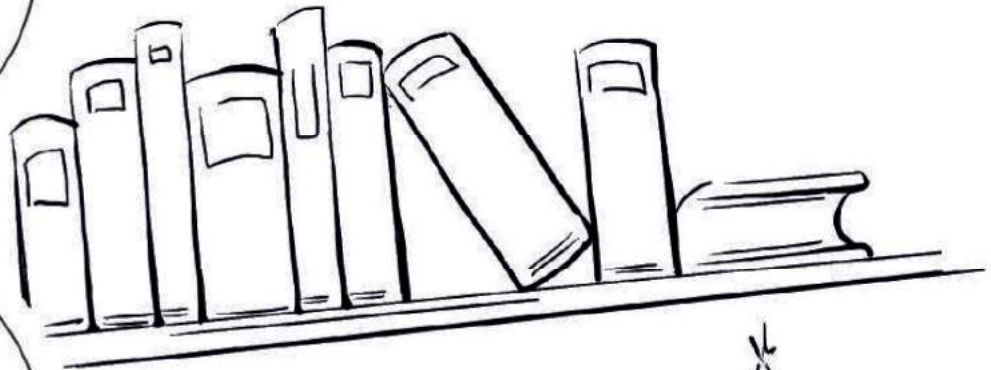
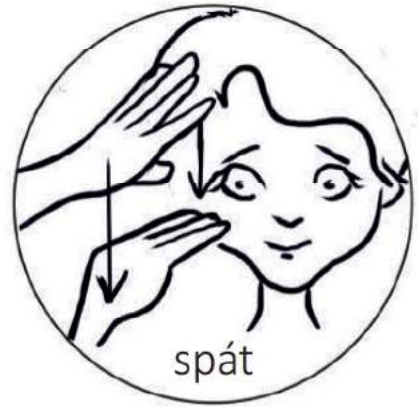


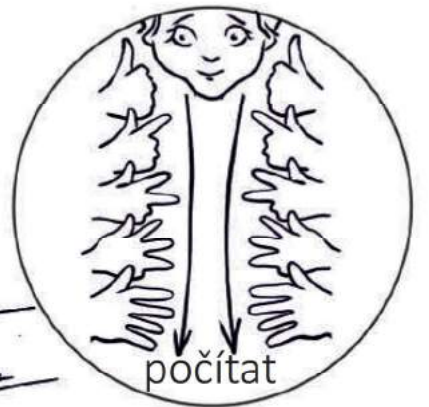
KOMUNIKACE





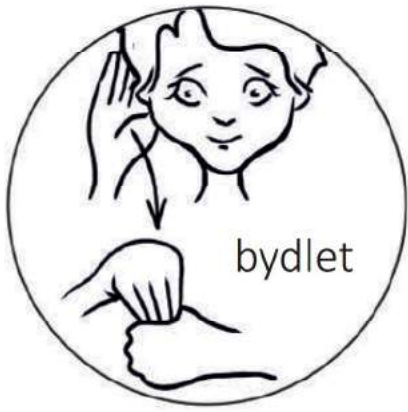
SLOVESA



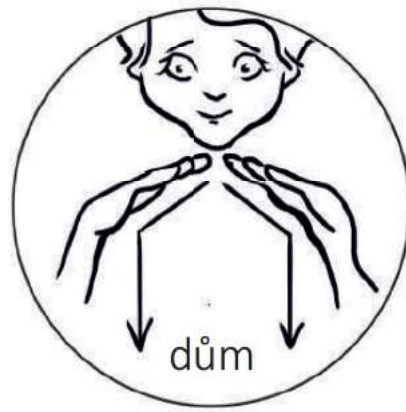


POHÁDKA





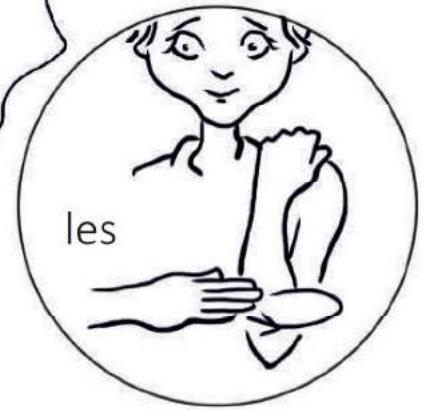
bydlet



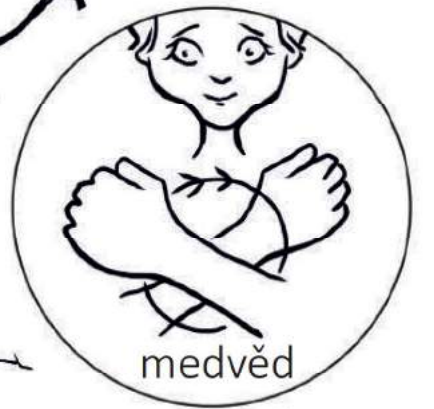
dům



vypravěč

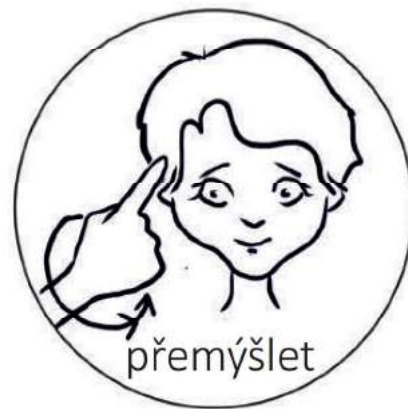


les



medvěd

POHÁDKA





okno



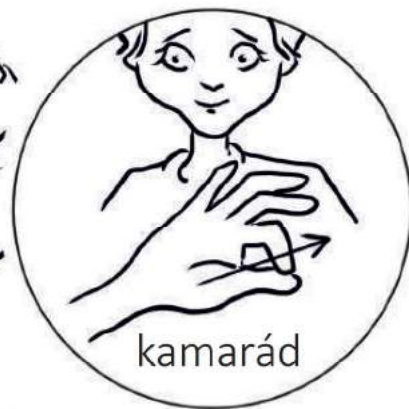
dveře



postavit



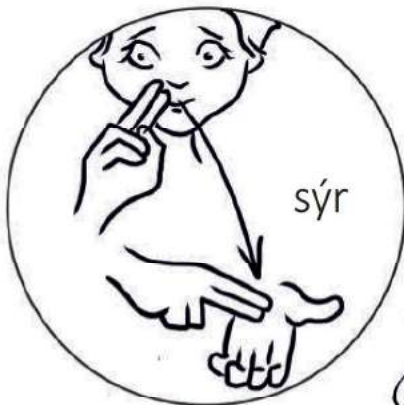
plakat

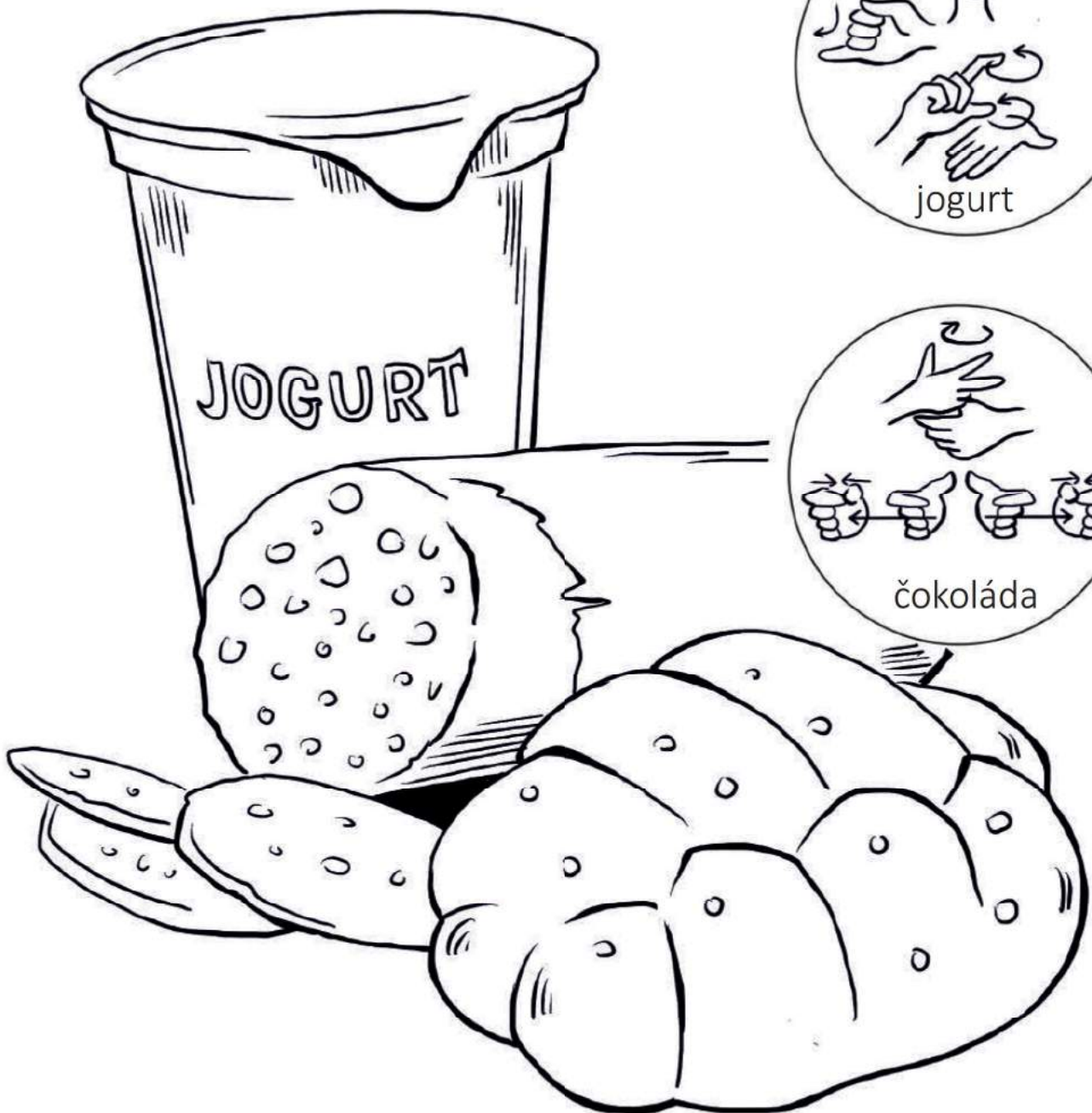


kamarád



JÍDLO





JÍDLO



REJSTŘÍK

Předmluva	1
Pravidla	2
Prstová abeceda	3
Číslovky	4
Dny v týdnu	5
Pozdrav	6
Fráze	7
Rodina	8, 9
Byt	10, 11
Oblečení	12, 13
Pití	14, 15
Škola	16, 17
Sport	18, 19
Dopravní prostředky	20, 21
Plzeň	22, 23
Zvířata	24, 25
Povaha	26, 27
Komunikace	28, 29
Slovesa	30, 31
Pohádka	32, 33, 34, 35
Jídlo	36, 37, 38

Slovník znakového jazyka
aneb Znakovka do škol

Svaz neslyšících a nedoslýchavých osob v ČR, z.s.,
Spolek neslyšících Plzeň, p.s.
Tylova 405/14
301 00 Plzeň

Sestavili Mgr. Miroslav Hanzlíček a Mgr. Kristýna Voříšková
Ilustrace, obálka a grafická úprava Petr ŠrédI

Vytiskla tiskárna Kirsch CZ s.r.o.
Skladová 24, 326 00 Plzeň

Vydalo nakladatelství ŠrédI Petr
Levandulová 31, 312 00 Plzeň
1. vydání, Plzeň 2017

www.sredl.eu



ISBN 978-80-906833-0-3

SREDL.EU